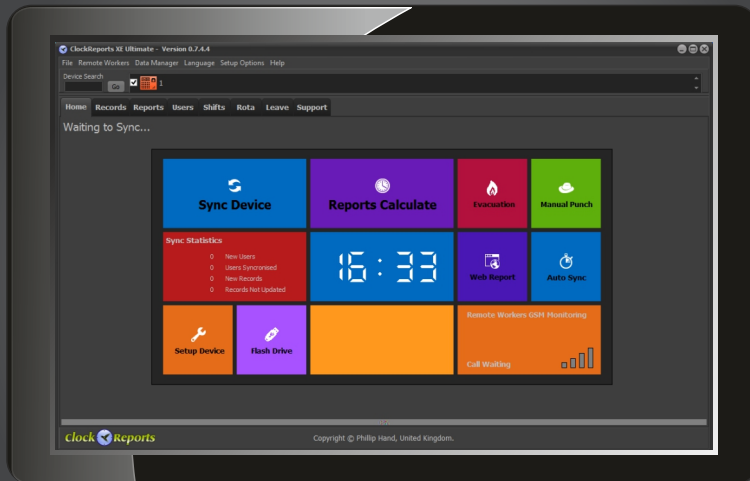


clock Reports



ClockReportsXE

Time & Attendance & Clock
Machine Management Software



Built on Windows 8



USB Pen Drive Records Capture

Features

Software Features

- Desktop Windows XP, Vista, 7, 8 & Server compatible
- iMac Compatible via Parallels, VMWare or Virtualbox
- Basic version requires zero configuration
- Lite version suitable for bars, clubs and late night working etc.
- Advanced version for shift patterns, pay & 24 hour working
- Ultimate version for payroll or HR integration & extra Support
- Compatible with Anviz, Bio-Office & ZK Technology hardware
- Fingerprint, RFID card, PIN code & face recognition
- Supports network, USB cable or USB pen drive data capture
- Unlimited employees & departments
- Unlimited hardware time clocks
- Desktop or Client & Server install
- MS Access or optional MSSQL database
- Excel based powerful but easy reporting
- Built-in Web server for remote event & report viewing
- Email engine for reports distribution
- Elegant report exception handling with manual punch option
- Desktop user enrolment with optional USB biometric readers



Global Technics
The Weston Centre,
Weston Road,
Crewe, CW1 6FL, UK

Tel: 0845 094 8071 www.clockreports.com

ClockReportsXE Features	BASIC	LITE	ADVANCED	ULTIMATE
Unlimited Employees / Unlimited Time Clocks	●	●	●	●
Unlimited Departments			●	●
Standard Attendance Reports / Total Hours Worked	●	●	●	●
After Midnight Calculating		●	●	●
Advanced Reports Calculating			●	●
Unlimited Shift Patterns			●	●
Staff Rota & Roistering			●	●
Regular Pay Calculating			●	●
Overtime Pay Calculating / Flexitime carry over			●	●
Shifts can have individual Pay rates			●	●
Breaks Taken Calculating			●	●
Late Deduction Calculating			●	●
Shift Start Time Rounding			●	●
Absence Forget to Punch Handling	●	●	●	●
Timesheet In Place Editing of Error Punches			●	●
Custom Report Periods			●	●
Leave, Holiday and Sickness Reports			●	●
Work Code / Job Code Reports / Job Titles			●	●
Advanced Report / Multiple Report Printing			●	●
Export Reports to Excel		●	●	●
Export Reports to PDF			●	●
Export to Sage or Quickbooks Payroll				●
Import and Export Users Data				●
Export Records Data			●	●
Fire or Evacuation Roll Call with status printing			●	●
Remote Web View - Evacuation and Users In or Out Status, Time Sheets				●
Email Time Sheets to Employees				●
Server / Client Install Configuration supported				●
Optional USB Finger Scanner for 'at PC' punching	●	●	●	●
Remote / Lone Worker Punch from Mobile Phone				●
Online Web Ticket Support	●	●	●	●
Help Desk Telephone Support				●
Automatic Time Clock Device Data Sync			●	●
Web Software Updates		●	●	●

ClockReportsXE Report Types Supported	BASIC	LITE	ADVANCED	ULTIMATE
Standard - 4 In/Out Periods, Total Hours, Punched Breaks	●	●	●	●
Standard - 4 In/Out Periods, Total Hours, Punched Breaks, After Midnight Finish		●	●	●
Standard - 8 In/Out Periods, Total Hours, Punched Breaks	●	●	●	●
Standard - 4 In/Out Periods based on In/Out Punch State from Time Clock	●	●	●	●
Standard - 8 In/Out Periods, Total Hours, Punched Breaks, After Midnight Finish, All Users on one sheet for each day	●	●	●	●
Work Code / Job Code - Total hours job worked	●	●	●	●
Advanced Daily - 4 In/Out Periods, Total Hours, Punched Breaks, Compulsory Breaks, Late, Under Time, Daily Overtime, Shift Pattern, Rota, After Midnight Finish, Shift Time Rounding, Early Clock In Ignore, Leave Early, 3 Pay Rates, Regular Pay, Overtime Pay, Flex-Time, Days worked, Sick Days, Holidays, Work Away, State Leave, Period Totals, by Departments			●	●
Advanced Accumulative - 4 In/Out Periods, Total Hours, Punched Breaks, Compulsory Breaks, Late, Under Time, Total Report Period Overtime, Shift Pattern, Rota, After Midnight Finish, Shift Time Rounding, Early Clock In Ignore, Leave Early, 3 Pay Rates, Regular Pay, Overtime Pay, Days worked, Sick Days, Holidays, Work Away, State Leave, Period Totals, by Departments			●	●
Punch Records, All, by User, by Work Code, by Date	●	●	●	●
Rota by Month			●	●
Evacuation List, Name, Contact Phone, Users Last Punch & Punch State			●	●

